



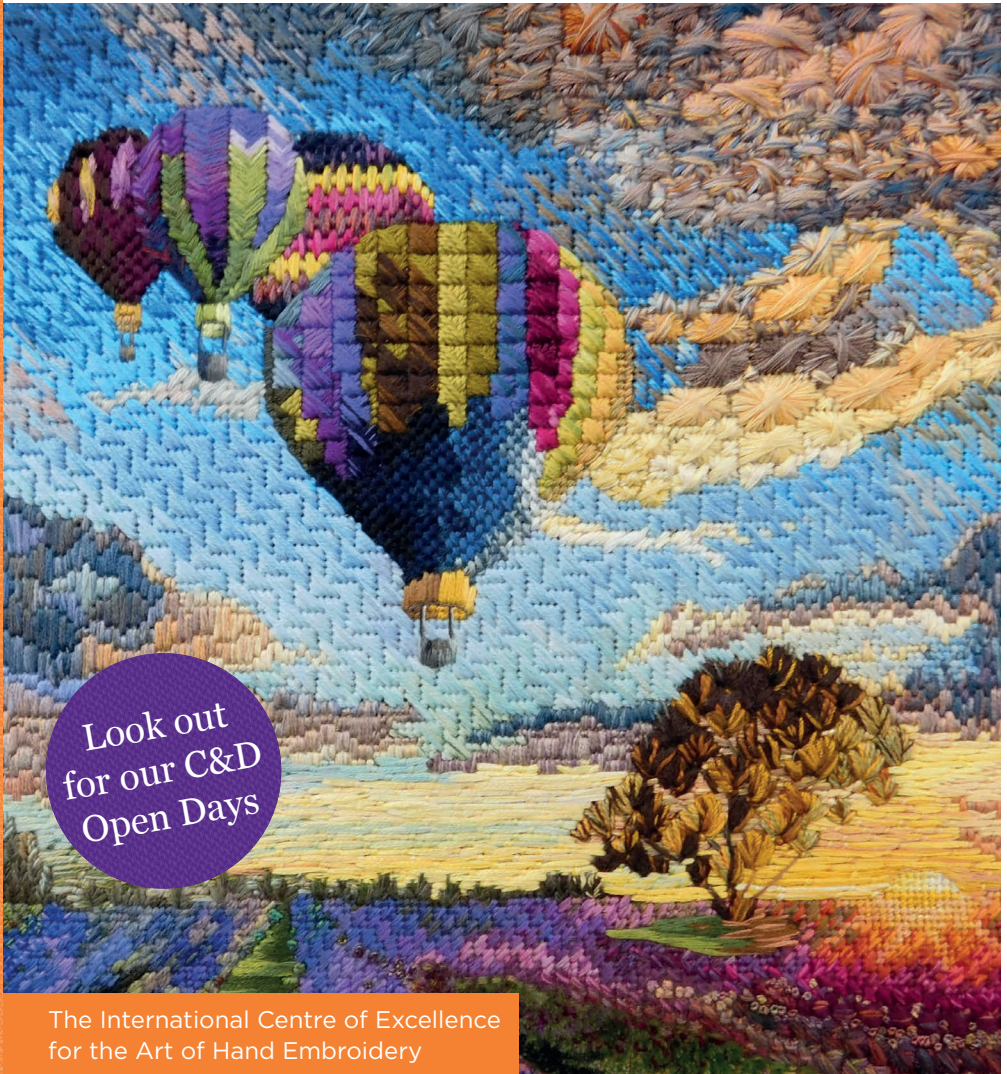
Patron: HRH The Duchess of Cornwall  
President: HRH The Duchess of Gloucester

**RSN**  
ROYAL SCHOOL  
OF NEEDLEWORK

Founded 1872

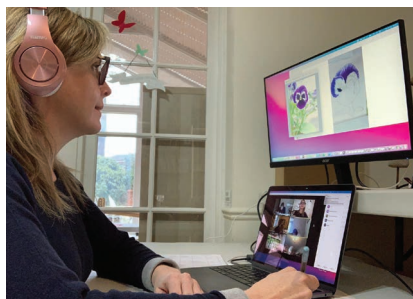
# Certificate & Diploma

in Technical Hand Embroidery



Look out  
for our C&D  
Open Days

The International Centre of Excellence  
for the Art of Hand Embroidery



The Certificate & Diploma in Technical Hand Embroidery is a flexible course to suit everyone's stage in life – whether it's for your career, you have always wanted to learn and now have the time or simply want to do something for yourself.

The Certificate concentrates on four core hand embroidery techniques and is completed in a recommended order allowing you to develop and progress with confidence. It includes Jacobean Crewelwork, Silk Shading, Goldwork and Canvas Stitches or Blackwork.

The Diploma follows on, giving the opportunity to take some techniques to a higher level as well as learn others, including Appliqué, Whitework and Stumpwork.

The Certificate & Diploma enable you to develop solid skills in hand embroidery, and on completion, reach the highest standards of this long standing tradition. As it is a flexible course, students can start at any time during the academic year, choosing days to suit their work and family commitments.

The course is taught across the UK in Hampton Court Palace in south west London, Bristol, Rugby, Durham and Glasgow, internationally in Japan and North America, and Online.

**For more information about Certificate & Diploma, please contact the Education Department:**

E: [education@royal-needlework.org.uk](mailto:education@royal-needlework.org.uk)

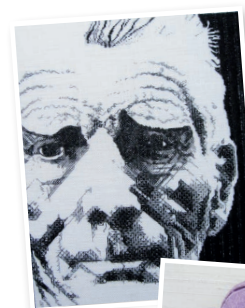


## What techniques can I learn?

### Certificate in Technical Hand Embroidery

The Certificate course concentrates on the core techniques of hand embroidery and is completed in a recommended order: Jacobean Crewelwork; either Canvas Stitches or Blackwork; Silk Shading and Basic Goldwork.

- **Jacobean Crewelwork** – This is a traditional technique worked in crewel wool on linen twill using surface embroidery stitches. Your own design is based on the Tree of Life. You will start with this technique to learn the RSN approach to all aspects of preparation, design, stitch and finishing.
- **Canvas Stitches** – Many more stitches can be worked on canvas than is realised. This technique is a combination of multiple textures and stitches within one piece.



- **Blackwork** – A counted thread technique based on the use of geometric patterns using thread thickness and pattern construction to create tonal and three dimensional effects.
- **Silk Shading** – Also known as 'painting with a needle', you will learn how to work a beautifully shaded piece based on a flower, fruit, vegetable or fungi, creating a three dimensional appearance.
- **Basic Goldwork** – This technique has its history in military and royal regalia but it can also be worked to create the most beautiful and dramatic pieces of embroidery. You will create your own design, featuring a minimum of four Goldwork techniques.

*“Where better to learn than with the experts?”*

*Cecilia Rexworthy, Certificate Student, Hampton Court Palace*



## Diploma in Technical Hand Embroidery

The Diploma progresses on from successful completion of the Certificate course and gives you the opportunity to further develop your skills and increase your knowledge of techniques.



The core techniques are: Appliqué; Advanced Silk Shading; Advanced Goldwork; and Blackwork or Canvas Stitches (whichever technique was not studied for your Certificate).

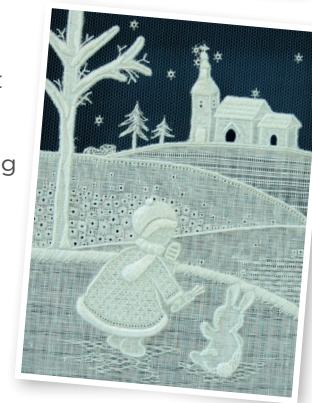
- **Appliqué** – The application of mixed fabrics to a fabric base, which is finished with a variety of embellishments to a design of your choice.
- **Advanced Silk Shading** – A naturally-shaded embroidery of an animal, bird, fish or reptile utilising stitch direction to denote fur, feathers or scales.
- **Advanced Goldwork** – Building on the skills learned at Certificate level you will use a range of advanced metal thread techniques to achieve a desired outcome.
- **Canvas Stitches/Blackwork** – See Certificate course information.

*“I enrolled on the course because I was planning my early retirement. The course is rich, creative and inspirational, and it’s just amazing what you can achieve.”*

Ann Howden, Diploma Student, RSN Midlands

Followed by a choice of two techniques from the list below:

- **Canvas Shading** – Tent stitches in wool on canvas worked to create natural shading giving the design depth and movement.
- **Stumpwork** – Work a Stumpwork figure demonstrating an understanding of the use of design and an advanced skill level in the choice, application and use of fabrics, threads and technique.
- **Creative Metal Thread** – To show a confident and advanced skill level in the creative choice, experimenting with the application and use of metal threads.
- **Tassels & Cords** (at Hampton Court Palace only) – Produce a decorative tassel on a wooden mould, demonstrating an understanding of construction, cord making and use of different threads and materials.
- **Whitework Pulled & Drawn Thread** – These are traditional techniques that are created by either pulling the fabric thread together to form a pattern or by drawing out the fabric threads to give open areas which can be enhanced with embellishments and stitches.
- **Whitework Broderie Anglaise & Richelieu** – These techniques are a combination of solid and open areas with the negative space equally important as the positive space. Dramatic contrast can be achieved using a dark colour backing.
- **Quilting** (English, Italian & Trapunto) – Quilting using attached layers of fabric in a decorative design.
- **Box Construction** – Design and construct a creative box with at least one moving part and a small amount of embellishment.



## Advanced Diploma

Following on from successful completion of the Diploma, we offer Advanced Diploma techniques: Three-dimensional Box; Both-Sides-Alike and Advanced Whitework.





## When can I start the course?

We have a flexible structure with the option to start the course at any point during the academic year, subject to availability of places. Once you commence the course, we recommend regular attendance to best build your skills.

We hold **Intensive Courses** at different times throughout the year at most of our satellite learning centres (normally eight days over a two week period per technique). These are particularly popular with international students. It is also possible to learn techniques in different satellites as the RSN teaching experience is always the same.



## Tuition Information

Each technique consists of eight days tuition which is the minimum amount of time you need to design your piece, apply the design, complete the embroidery and mount it ready for assessment. Students will be required to complete work at home between tuition days.

Tuition days run from 10.00am to 4.00pm with a morning coffee break and an hour for lunch. Classes run in September through to the second week in December and start back in January with generally a two week break at Easter. The summer term normally finishes the second week of June.

Tuition days vary at our different teaching satellites. Please visit our website for current timetables.

*Please note that tuition is in English only so a good understanding of English is recommended (apart from in Japan).*

## Assessment

Each completed module is assessed and requires a high standard of achievement to demonstrate a full understanding of the skills learnt. Assessments are undertaken at the end of each term, three times a year.



## Next steps

Before you enrol, we recommend you talk to our Education Manager or book an Open Day. Visit our website or contact [education@royal-needlework.org.uk](mailto:education@royal-needlework.org.uk) for more information and dates.

**Cost** – For the Certificate, students must complete four techniques. Each technique costs £1,136 (as of April 2021). Students must attend a minimum of eight days for each technique, therefore a minimum of 32 days at a tuition cost at £4,544 (four techniques x eight days) is required for the Certificate. Additional tuition days can be purchased as required.

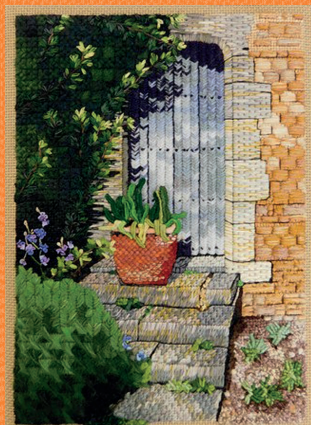
For the Diploma, students must complete six techniques.

Materials for each technique are additional. The Jacobean starter kit costs approx £120 and includes the professional slate frame which should last a lifetime. The materials for other techniques cost between £25 to £60, with Goldwork being the most expensive.

*“The quality of teaching is superb. I am achieving a level of technical skill which I never would have thought possible before I started the course.”*

*Ghislaine Peart, Diploma Student, Hampton Court Palace*





Royal School of Needlework  
 Apartment 12a  
 Hampton Court Palace  
 Surrey KT8 9AU, UK

**w: [royal-needlework.org.uk](http://royal-needlework.org.uk)**

**t: +44 (0)20 3166 6932** (general enquiries)

The RSN is a registered charity no. 312774.

Information correct at time of going to press (as at February 2021).

All images ©RSN unless otherwise stated.

