



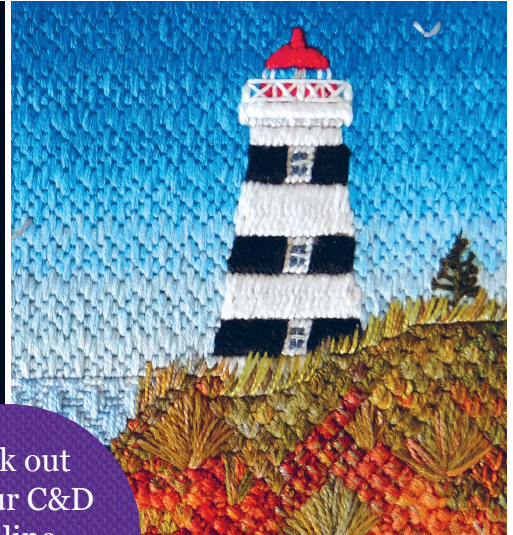
Patron: HRH The Duchess of Cornwall  
President: HRH The Duchess of Gloucester

RSN  
ROYAL SCHOOL  
OF NEEDLEWORK

Founded 1872

# Certificate & Diploma

in Technical Hand Embroidery

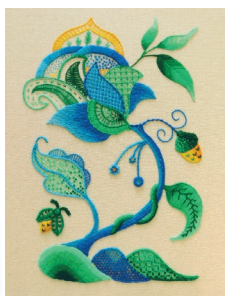
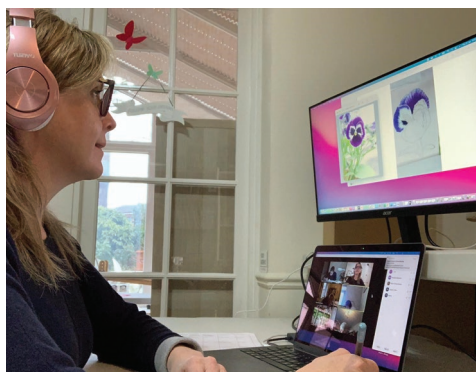


Look out  
for our C&D  
Online  
Information  
Sessions



The International Centre of Excellence  
for the Art of Hand Embroidery





The Royal School of Needlework (RSN) is the international centre of excellence for the art of hand embroidery and offers a range of courses for beginners through to advanced level. The Certificate & Diploma in Technical Hand Embroidery (C&D) is a flexible course taught by expert RSN Tutors, offered both Onsite and Online.

The C&D is a flexible course so students can begin the course at any time during the academic year, choosing days that suit them. There are also C&D Intensive Courses during the summer which are popular with international students.

The course is taught **Onsite** at Hampton Court Palace in south-west London, Bristol, Rugby, Durham and Glasgow, and internationally in Japan and America. We also offer **Online Tuition** in three different time zones, broadly covering UK/Europe, Australia/New Zealand/South East Asia and North/South America, so you can learn with the RSN wherever you are based.



## Certificate in Technical Hand Embroidery

The Certificate course concentrates on the core techniques of hand embroidery and is completed in a recommended order: Jacobean Crewelwork; either Canvas Stitches or Blackwork; Silk Shading and Basic Goldwork.

- **Jacobean Crewelwork** is the first Certificate module and is worked in crewel wool on linen twill using surface embroidery stitches. The design is traditional and based on the Tree of Life. This module introduces elements of design, planning, stitch selection and accuracy in execution and decisions about colour.
- **Canvas Stitches** is a counted thread technique using a variety of threads and stitches. It introduces ideas about texture, colour and scale.

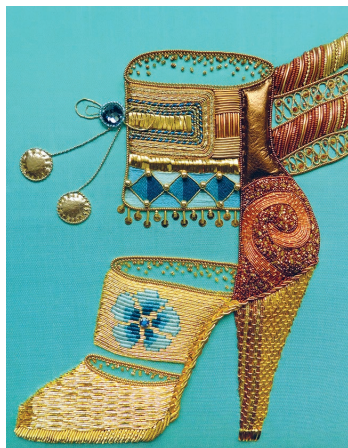


- **Blackwork** is a monochrome counted thread technique. It combines manipulation of traditional Blackwork patterns and the use of five thicknesses of thread, fine to coarse, to replicate a tonal range. Scale and texture are also important concepts.
- **Silk Shading** is also known as 'painting with a needle'. The technique is worked with just one stitch, Long and Short. The module requires increasing precision in stitch placement and focuses on understanding colour and light and shade to create a realistic image of a flower, fruit or vegetable.
- **Goldwork** has its history in military and royal regalia. It can also be worked in more contemporary ways to create a variety of beautiful and dramatic pieces. Metallic threads are applied to a surface fabric, usually silk or linen, and the focus is on technical precision.



## Diploma in Technical Hand Embroidery

The Diploma progresses on from successful completion of the Certificate course and gives students the opportunity to further develop their skills and increase their knowledge of techniques. The Diploma consists of six modules, four of which are mandatory and two are chosen from the optional list below.



### Mandatory modules:

- **Appliqué** is the first of the Diploma modules. It involves the layering of mixed fabrics on to a fabric base using a variety of different edges and padding techniques. It can also include surface stitch and other embellishments.
- **Advanced Silk Shading** uses a design based on an animal, bird or fish, utilising stitch direction to denote fur, feathers or scales. As an alternative, a figure can be stitched using the Tapestry Shading technique.
- **Advanced Goldwork** builds on the skills learned at Certificate level by increasing the range of materials, padding and techniques used.
- **Canvas Stitches or Blackwork**, whichever is not taken on the Certificate.

### Optional modules:

- **Canvas Shading** uses Tent Stitch in crewel wool on canvas to create natural shading. The focus is on detailed analysis of the colours of the design being replicated.
- **Stumpwork**, also known as **Raised Work**, is three-dimensional embroidery using a range of techniques to create depth and dimension. The worked piece includes a Stumpwork figure.
- **Whitework: Pulled & Drawn Thread** are traditional techniques that are created by either pulling the fabric thread together to form a pattern or by drawing out the fabric threads to give open areas which can be enhanced with embellishments and stitches.
- **Whitework: Broderie Anglaise & Richelieu** are combined cutwork techniques. Ideas of positive and negative space create solid (stitched) and open (cut) areas. Dramatic contrast between different areas is achieved by using dark backing fabric.
- **Box** involves pieces of card cut to size, covered in fabric and sewn together to construct a box with at least one moving part and a small amount of embellishment. A preliminary box is also made as a practice exercise.
- **Creative Metal Thread** allows Goldwork embroidery skills to be used in an experimental way with a variety of materials.



### Advanced Diploma Techniques

A number of other techniques can be taken as individual courses post Diploma. These include Both-Sides-Alike, Fine Whitework, Tassels and Cords, Quilting and Creative Box.





### Embroidery experience

No formal qualifications are required for joining the course, but those who have never embroidered before are encouraged to attend an RSN Day Class first.

### Time frame

Each module is a minimum of eight days tuition; additional days can be purchased. Onsite Tuition runs from 10am to 4pm with breaks. The length of the Online sessions varies according to the time zone. Whether Onsite or Online there is a minimum of one day of homework for each day of tuition.

We allow five years for completion of the Certificate and the same for the Diploma. The average completion time is two years.

### Programme flexibility

It is possible to start the C&D at any point in the academic year, whether learning Onsite or Online. There is no typical attendance pattern as it depends on the student's circumstances; options include weekly, fortnightly and monthly.

- **Onsite** C&D days can be booked individually and each day has a varying combination of students working on a mix of techniques. There are C&D Summer Intensive Courses at some UK venues, including Hampton Court Palace, and an Intensive Course is also offered in America.
- **Online** C&D days operate in the same way as the Onsite option above. There are pre-determined times and dates, which cover a single technique.

Jacobean Crewelwork must be taken either Onsite or Online. It is not possible to mix the two versions as they run in different ways. The other modules, however, can be taken as a combination of Onsite and Online.

The student to Tutor ratio for all classes is never greater than six to one.



### Design

The C&D is a practical course and each module includes creating a design and a work plan. Previous design experience is not necessary and students without such experience should not be deterred from joining the course. Students are supported by expert RSN Tutors through the design process and may find it helpful to join one of the Drawing and Design Day Classes.

### Language

Tuition is in English other than in Japan.

### Assessment

Assessment is optional. On completion of the Certificate or the Diploma, students are invited to attend a Graduation Ceremony and participate in the annual exhibition of work. For those not opting for assessment we offer a 'Certificate of Completion' rather than one of achievement.



### Costs

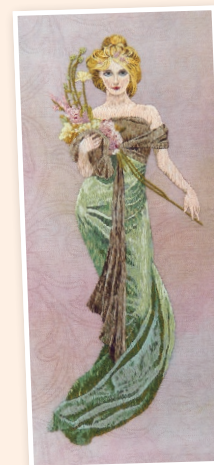
#### Tuition Fees

**Onsite:** £155 per day (£1240 for eight days/40 hours).

**Online:** The Jacobean Crewelwork module costs £1581, as it is a longer course with more content (51 hours). The other Online modules cost the same as learning Onsite.

#### Starter Kit Fees

Some Certificate modules have 'starter kits' of equipment and/or materials and the costs are added at the time of booking the first class:



- **Jacobean Crewelwork:** The starter kit includes a professional slate frame, which should last a lifetime, and other items that are used repeatedly throughout the C&D programme.

Onsite course: £155

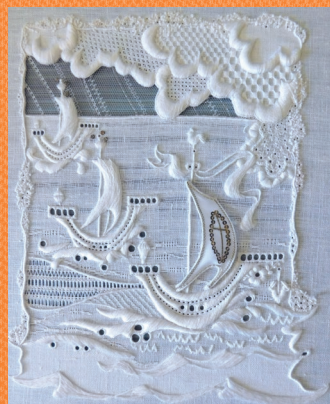
Online course: £270 (includes extra equipment, materials and postage)

- **Blackwork threads:** £27.50
- **Goldwork threads:** £54

#### Other costs

Materials such as threads, needles etc. can be purchased from the RSN where C&D students receive a 10% discount; they can also be sourced privately.





## Next steps...

There are two ways to start your RSN Certificate & Diploma in Technical Hand Embroidery journey: you are invited to attend an Online Information Session or you can complete the online registration form and the Education Team will be in touch to get you started. The RSN looks forward to welcoming you to this most wonderful hand embroidery course soon.

Royal School of Needlework  
Apartment 12a  
Hampton Court Palace  
Surrey KT8 9AU, UK

**w:** [royal-needlework.org.uk](http://royal-needlework.org.uk)

**e:** [education@royal-needlework.org.uk](mailto:education@royal-needlework.org.uk)

**t:** **+44 (0)20 3166 6932** (general enquiries)

The RSN is a registered charity no. 312774.  
Information correct at time of going to press (as at October 2023).  
All images ©RSN unless otherwise stated.

