



Patron: HRH The Duchess of Cornwall  
President: HRH The Duchess of Gloucester

**RSN**  
ROYAL SCHOOL  
OF NEEDLEWORK

Founded 1872

# BA (Hons) Hand Embroidery



 @rsndegree

[www.rsndegree.uk](http://www.rsndegree.uk)

# BA (Hons) Hand Embroidery

The BA (Hons) Hand Embroidery Degree is a world-renowned programme, delivered by the Royal School of Needlework (RSN). The programme is full-time over three years and you will study at Hampton Court Palace, south west London. The RSN provides a dynamic learning experience connecting your individual creative practice with textile and design theory. Study is in small groups with tutorial support and guidance from experienced academics, professional RSN embroidery tutors, visiting lecturers, technical and student support teams.



You will be encouraged to become a creative problem-solver, exploring traditional hand embroidery techniques within a contemporary context. Studio-based learning is by project, with individual and group tutorials and reviews. Students are encouraged to challenge their creative ideas and individual outcomes through our supportive tutorial feedback process. RSN Degree Students have access to our onsite art and design library, IT suite, specialist textile resources, and exquisite,



rarely seen embroideries to support their evolving research.

Visits to galleries and special collections will enhance your study, with established industry links which provide students with valuable networking opportunities and experience. RSN Degree Students are eligible to apply for Kingston University Halls of Residence and have access to KU Campus learning and student support facilities. Through participation in live projects and competitions, you will learn about the diverse career routes that hand embroidery offers, gain invaluable opportunities to widen your industry connections and develop your



[www.rsndegree.uk](http://www.rsndegree.uk)



employability skills which are at the core of our programme.

The BA (Hons) Hand Embroidery Degree programme has collaborated on a wide range of high-profile projects within couture, costume, interiors, and textile art. Connections include: Alexander McQueen; Burberry for Makers House; Patrick Grant; E. Tautz; Tamara Ralph;

PJ Harvey; Nicholas Oakwell Couture; Erdem; Dame Zandra Rhodes; Lock & Co Hatters; HBO/Game of Thrones and artists Susan Aldworth, Stephen Wright and Musson+Retallick.

Thanks to generous supporters of the Royal School of Needlework, we are able to make Bursary Awards annually to many of our Degree Students.



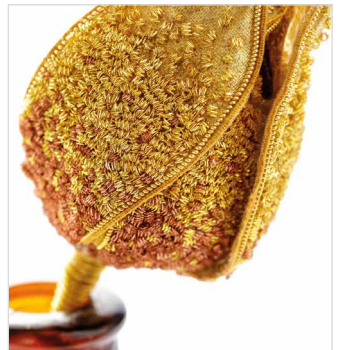


Patron: HRH The Duchess of Cornwall  
President: HRH The Duchess of Gloucester



BA (Hons)  
Hand Embroidery  
UCAS W237







BA (Hons) Hand Embroidery





Patron: HRH The Duchess of Cornwall  
President: HRH The Duchess of Gloucester



## Open Days

Join our onsite and online Open Days - please visit our website or contact us for dates.

W: [www.rsndegree.uk](http://www.rsndegree.uk)

T: +44 (0)20 3166 6929

E: [degree@royal-needlework.org.uk](mailto:degree@royal-needlework.org.uk)

Royal School of Needlework, Apartment 12a,  
Hampton Court Palace, Surrey KT8 9AU, UK

## Applications

Visit our Degree website for information on how to apply.

The programme is validated by Kingston University. UCAS W237

[www.kingston.ac.uk/undergraduate/courses/hand-embroidery](http://www.kingston.ac.uk/undergraduate/courses/hand-embroidery)

## Events and Shows

Find us at specialist events and shows throughout the calendar year.

Follow us on social media and sign up to the RSN e-news for more information.



Kingston  
University  
London

**Kingston  
School  
of Art**

[www.rsndegree.uk](http://www.rsndegree.uk)