



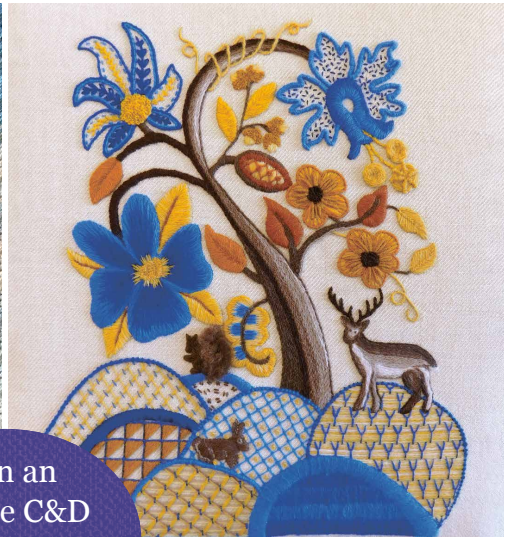
Patron: HRH The Duchess of Cornwall
President: HRH The Duchess of Gloucester

RSN
ROYAL SCHOOL
OF NEEDLEWORK

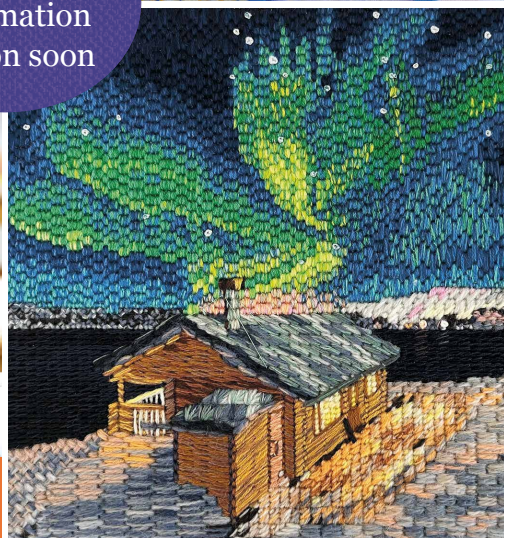
Founded 1872

Certificate & Diploma

in Technical Hand Embroidery



Join an
Online C&D
Information
Session soon



The International Centre of Excellence
for the Art of Hand Embroidery



The Royal School of Needlework (RSN) is the international centre of excellence for the art of hand embroidery and offers a range of courses for beginners through to advanced level. The Certificate & Diploma in Technical Hand Embroidery (C&D) is a flexible leisure course taught by expert RSN Tutors, offered both Onsite and Online.

Programme teaching and flexibility

We aim to offer students maximum flexibility when taking the course. The student to Tutor ratio for all classes does not exceed six to one.

Onsite tuition

We teach regular classes at Hampton Court Palace, south west London, as well as in Bristol, Rugby, Durham and Glasgow, and internationally in Japan (Tokyo) and Australia (Brisbane). There are also C&D Intensive Courses in the UK, America and Australia, which enable completion of one module over two weeks.

Online tuition

We offer Online tuition in three different time zones, broadly covering UK/Europe, Australia/New Zealand/South East Asia and North/South America. The first module, Jacobean Crewelwork, is offered as a set course and the other modules can be taken as set courses or through Online classes booked day by day.

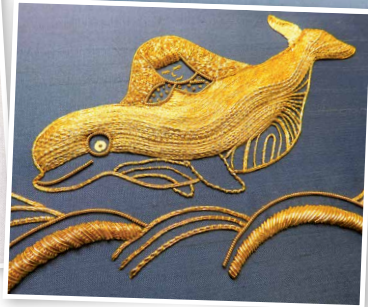
Jacobean Crewelwork must be taken either Onsite or Online; it is not possible to mix and match as the two courses run in slightly different ways. All other modules can be taken as either Online or Onsite or a combination.

Certificate in Technical Hand Embroidery

The Certificate course concentrates on the core skills of hand embroidery. These include accuracy, stitch selection, colour choices and thread decisions. Students also learn about scale, colour, light and shade, texture and much more besides. There are three mandatory modules and one choice, and each module builds on skills previously learned.

Mandatory modules:

- **Jacobean Crewelwork** is the first Certificate module. The design is traditional and is based on the Tree of Life.
- **Silk Shading** is also known as 'painting with a needle'. The aim is to create a realistic image of a flower, fruit or vegetable.
- **Goldwork** has its history in military and royal regalia. It can also be worked in more contemporary ways. Metallic threads are applied to a surface fabric, usually silk or linen.



Optional modules:

- **Canvas Stitches** is a counted thread technique using a variety of threads and stitches to create texture and scale.
or
- **Blackwork** is a monochrome counted thread technique.

Diploma in Technical Hand Embroidery

On completion of the Certificate, students may progress to the Diploma, which continues to build on and expand their skills. The Diploma course consists of six modules, four of which are mandatory.



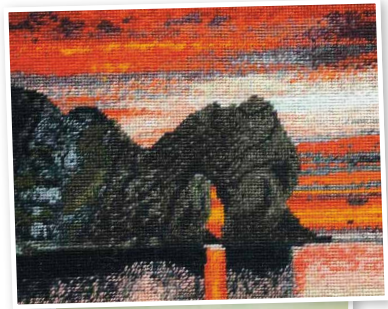
Mandatory modules:

- **Appliqué** is the first of the Diploma modules. It involves the layering of a variety of fabrics using different edges and padding techniques.
- **Advanced Silk Shading** employs an animal, bird or fish design, utilising stitch direction to denote fur, feathers or scales. As an alternative, a figure can be stitched using the Tapestry Shading technique.
- **Advanced Goldwork** builds on the skills learned at Certificate level by increasing the range of materials, padding and techniques used.
- **Canvas Stitches or Blackwork**, whichever is not taken at Certificate level.



Optional modules:

- **Canvas Shading** uses Tent Stitch worked in crewel wool and focuses on detailed analysis of the colours of the source image.
- **Stumpwork**, also known as **Raised Work**, uses a range of techniques to create depth and dimension. The worked piece includes a Stumpwork figure.
- **Whitework: Pulled & Drawn Thread**
Pulled and drawn work distorts the warp and weft or removes it completely. Additional stitching is used to create a design.



- **Whitework: Broderie Anglaise & Richelieu** are combined cutwork techniques. Ideas of positive and negative space create solid (stitched) and open (cut) areas.
- **Box** involves pieces of card cut to size, covered in fabric and sewn together to construct a box with at least one moving part and a small amount of embellishment.
- **Creative Metal Thread** allows the skills of Goldwork embroidery to be used in an experimental way with a variety of metal threads.

Post Diploma

A number of other techniques can be taken as individual courses. These include Both-Sides-Alike, Fine Whitework, Tassels and Cords, Quilting and Creative Box.

Embroidery experience

The C&D programme is a substantial commitment. No formal qualifications are required but those who have never embroidered before are encouraged to try a Short Course first.

Time frame

Each module is a minimum of eight days tuition; additional days can be purchased. Onsite tuition runs from 10am to 4pm. The length of the Online sessions varies according to the time zone. Whether Onsite or Online, the equivalent of one day of homework is recommended for each day of tuition.

We allow five years for completion of the Certificate and the same for the Diploma. The average time for completion of the Certificate is two years.

Design

The C&D is a practical course and each module includes the creation of a design and planning the work. Previous design experience is not necessary and students without such experience should not be deterred from joining the programme. Tutors help with the design element and additional Drawing & Design Day Classes are also available.

Language

Tuition is in English other than in Japan.

Assessment

Assessment is optional.





Fees

Tuition fees

Onsite: £155 per day (£1240 for a total of eight days/40 hours).

Online: The Jacobean Crewelwork module costs £1581. It is a longer course with more content (51 hours). All other Online modules cost the same as learning Onsite.

Starter kit fees

Some Certificate modules have 'starter kits' of equipment and/or materials. The costs are added at the time of booking the first class, as follows:

- **Jacobean Crewelwork:** This starter kit includes a professional slate frame and other items that are used repeatedly throughout the C&D programme.

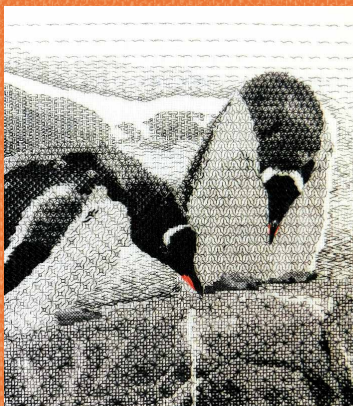
Onsite course kit: £155

Online course kit: £270*

(*there is more content in this kit; postage is included)

- **Blackwork threads:** £27.50
- **Goldwork threads:** £54





For further information, we invite you to join us for an Online C&D Information Session. When you are ready to start the course, you can complete the online registration form via the website. We look forward to welcoming you to the RSN.

Royal School of Needlework
Apartment 12a
Hampton Court Palace
Surrey KT8 9AU, UK

w: royal-needlework.org.uk

E: certificate@royal-needlework.org.uk

T: +44 (0)20 3166 6932 (general enquiries)

The RSN is a registered charity no. 312774.
Information correct at time of going to press.
All images ©RSN unless otherwise stated.

